

**Foam or Paste coating**

Direct application of foam or paste without rotary screen. The Magnojet application unit can optionally be installed in new or existing coating lines of any working width up to 4500 mms and may be combined with any high end brand of foam generator or paste pump supplier.



Magnojet inline washing unit



Stenter frame installation

**The automatic inline** washing unit increases the rentability of the Magnojet foam application machine.

**The Magnojet** foam application unit can be installed into any existing stenter, dryer or finishing plant.



Foam generator



Paste pump

**The necessary application amount** of any stable or instable foam is being supplied by an automatic computer controlled foam generator.

**Paste pump system**

**FIRST IN QUALITY & FIRST IN SERVICE**

PIONEERING INNOVATIONS FOR MORE THAN 135 YEARS



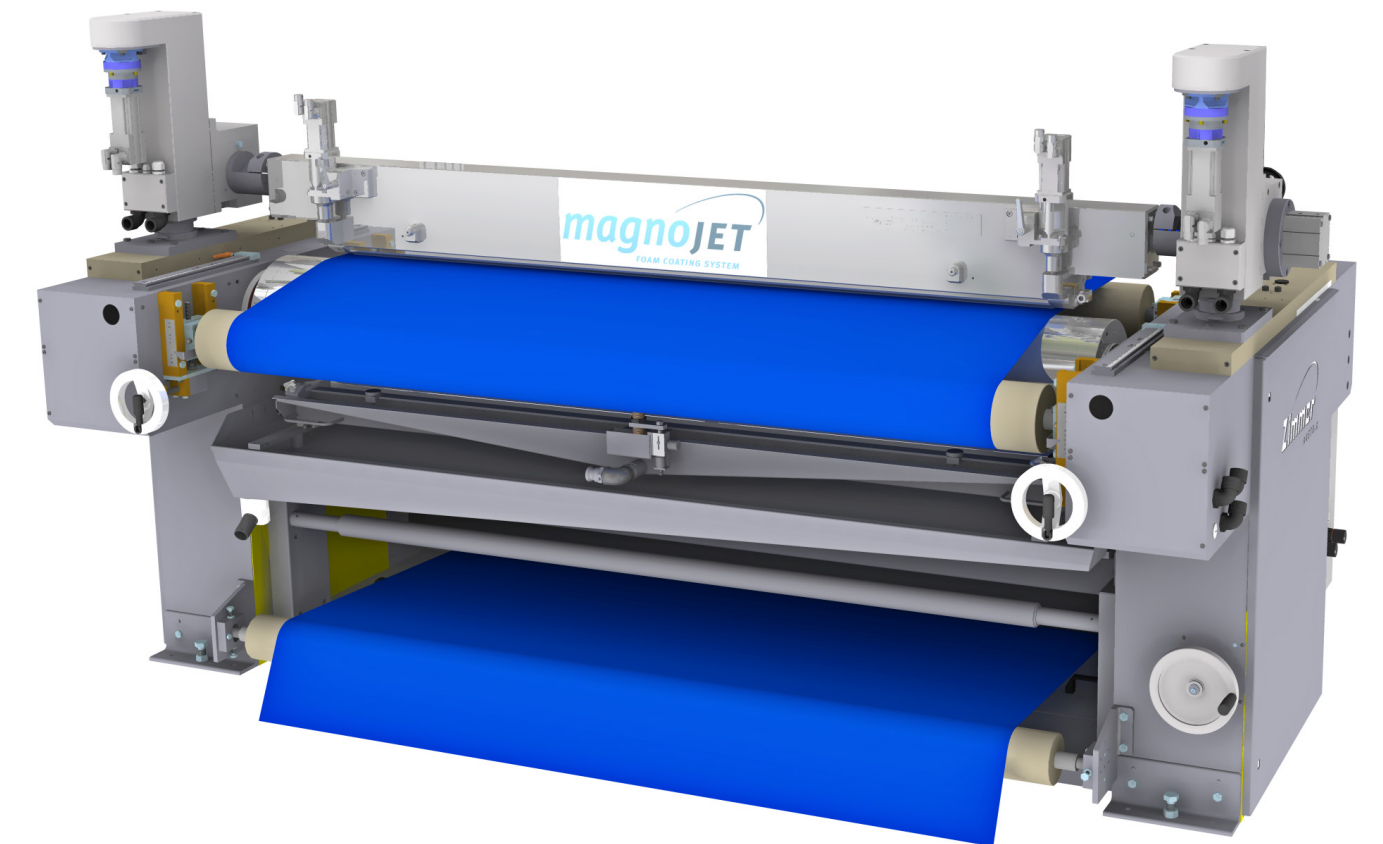
**J. Zimmer Maschinenbau GmbH**  
Screen & Coating Systems

Ebentalerstrasse 133  
9020 Klagenfurt  
Austria

**phone** +43 (463) 38 48  
**e-mail** sales@zimmer-austria.com



**Closed Coating System  
for Foam or Paste**

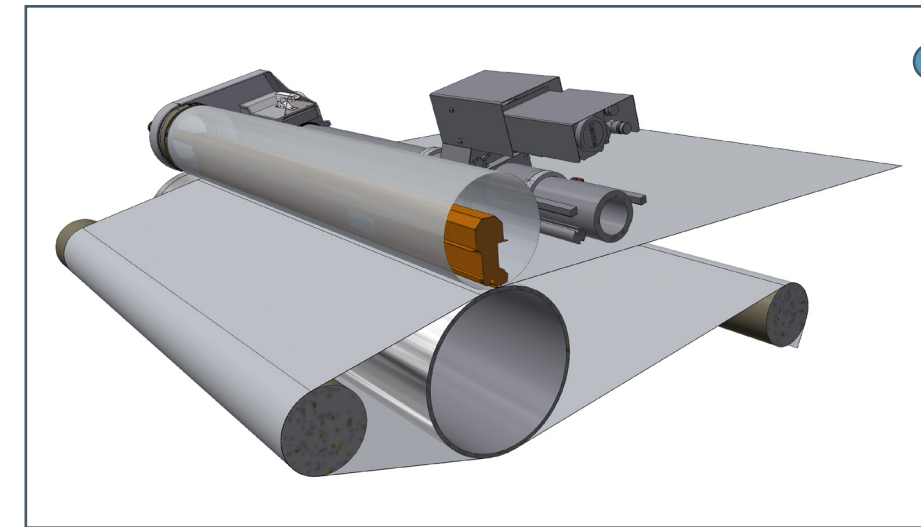


MADE IN AUSTRIA



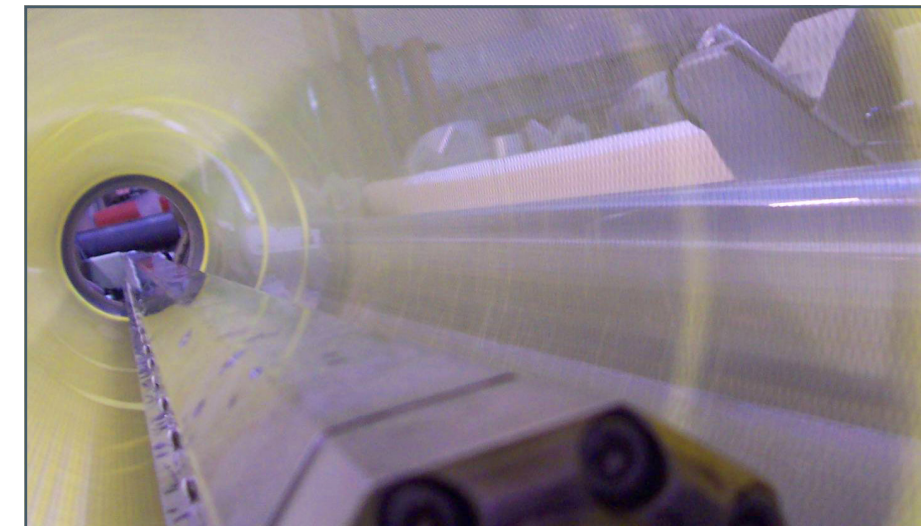
**The Magnojet**

is a closed coating system for paste or foam application in many different working positions controlled application by means of a constant substance feeding pump with a inline flow meter unit or a foam mixing unit with software controlled weight measuring system.

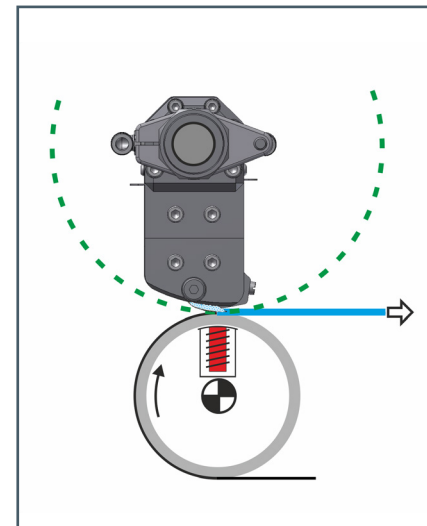


Magnojet rotary screen

**Magnojet Screen Application**  
at 12 o'clock position on top of the magnetic roller.



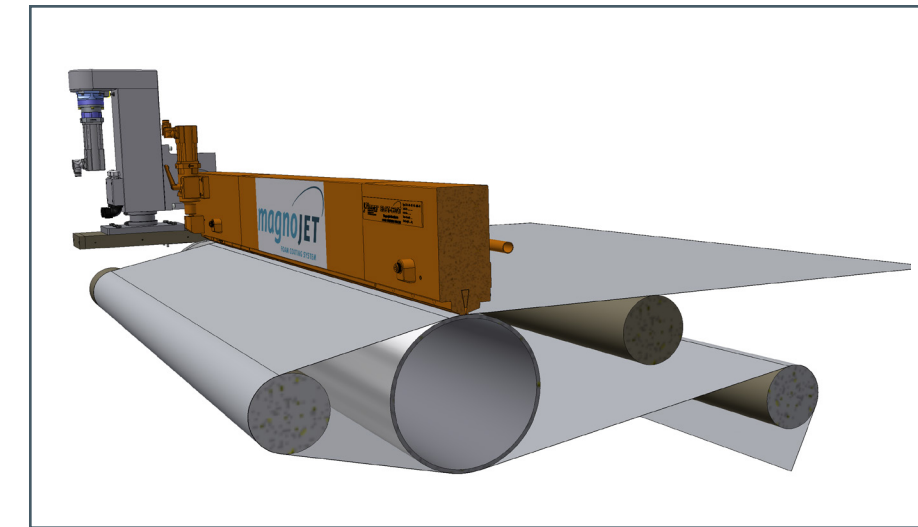
Magnojet RS inside of a rotary screen



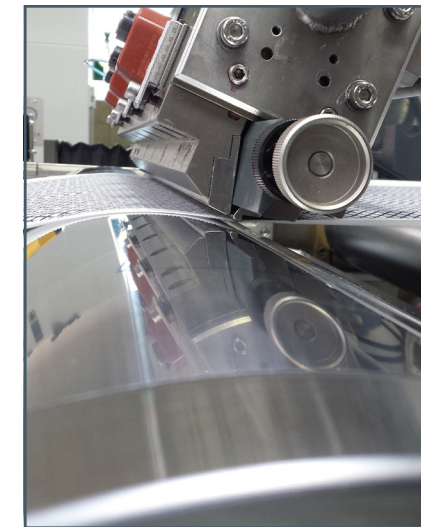
Cross-section Magnojet screen

**Foam or Paste coating**

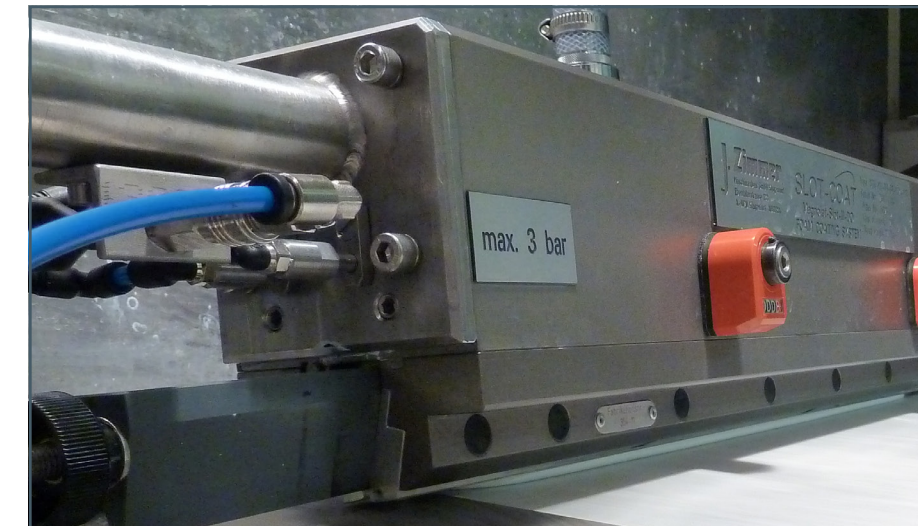
Thanks to the optimization of the internal geometry of distribution, the surfaces in contact with the application medium and the precise form of the jets, as well as the excellent distribution of the application medium guarantee an enormous number of applications.



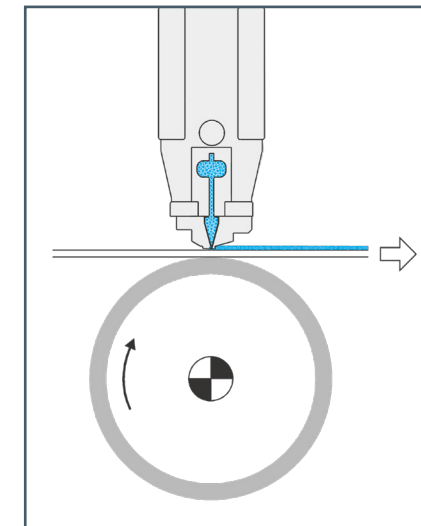
Magnojet direct application



Magnojet unit in knife on air position



Magnojet laboratory unit



Cross section Magnojet over roll

**Fast installation** in existing application lines thanks to the slim design of the Magnojet application unit. The uniformity of the application amount is being determined by the supply of the application medium into the slot, as well as by the transport of the substrate. The precision of the application amount is being determined from the adjustable size of the slot, the form of the slot and the distance between slot and counter roller.

**Magnojet - foam coating system**

for paste and foam applications on technical textiles, standard textiles, carpets, upholstery, nonwovens, glass fibre, tissues, ...

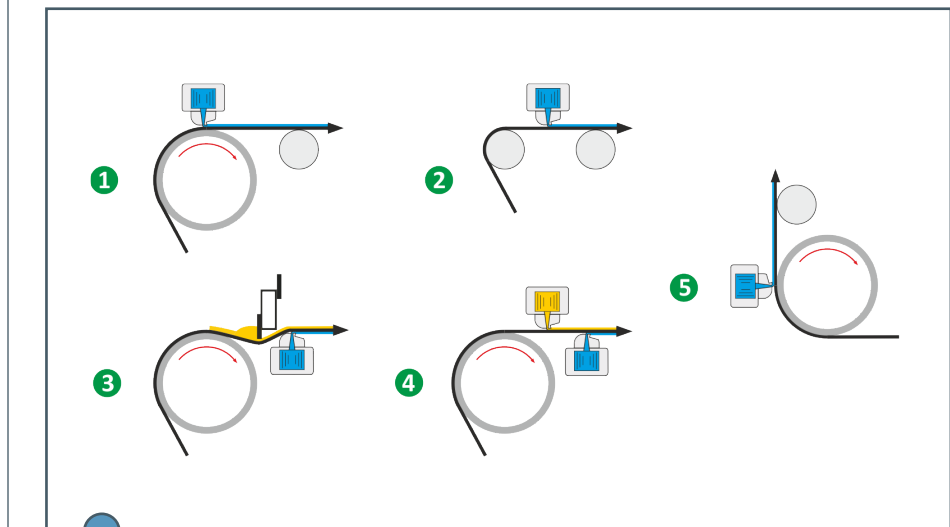
New closed slot coating system which allows a constant coating over the working width. The amount of application is controlled by paste pump or foam generator. Web contact or contactless application possible.



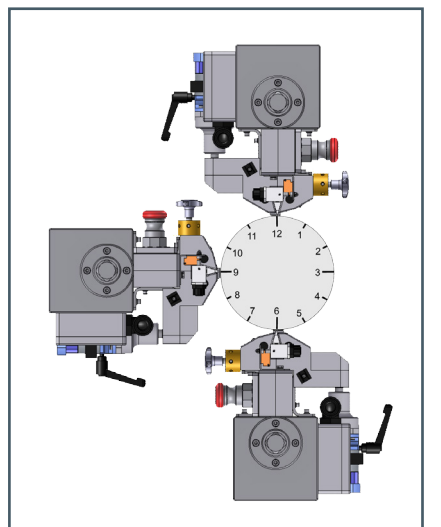
Vertical application over roll



Bottom side horizontal application



Magnojet coating system



6 o'clock, 9 o'clock, 12 o'clock

- 1 | Horizontal application over roll for surface coating
- 2 | Horizontal application on air for deep penetration coating
- 3 | Horizontal air knife and application from the bottom side
- 4 | Horizontal application on both side
- 5 | Vertical application over roll